

15

years

of Grand

Perfection



Grand
Inflatable
Boats

Contents



04



Why Grand?

56



Foldable Boats

Ranger
Corvette
Elf
Argus

74



**Grand International
Distribution
Network**

34



Silver Line

S550, S520, S470N,
S420N, S370N, S330,
S300, S275, S250

70



**Technical Data
Specification**

10



Golden Line

G850, G650,
G580, G500,
G480, G380,
G340

66



**Optional
Equipment**

Why Grand?



Why Grand?

1

A Proven Track Record of Success

Over the past 15 years we have manufactured and developed a highly successful product range. The current catalogue includes craft for recreational as well as professional users including RIBs, foldable boats and canoes together with a comprehensive range of accessories. Our company is now recognized as one of the market leaders in the field of Inflatable Boats.



3

Safety is Our Primary Consideration

Our primary consideration is to provide a safe environment for Our Customers. The safety aspects of every new model are therefore thoroughly reviewed at the start of the design process. Regardless of which model you choose; be it our baby E210 or perhaps an S330L tender for your yacht or the fabulous G850 Day Cruiser — you will always feel safe in a GRAND Inflatable Boat.



6



2

Innovations are the Hallmark of Our Success

The ability to continually innovate and refine our production processes is one of the key ingredients in GRAND's success. By utilizing state of the art engineering and design processes combined with an extensive research and development program we have not only raised the bar in terms of quality but have also been able to provide some of the finest contemporary naval architecture available!



4

Incomparable Pleasure and Comfort

In choosing any GRAND model you will not only get a high quality boat, but also the invaluable pleasure of spending time with your family and friends in natural surroundings; as well as appreciating the comfort and outstanding handling characteristics of your GRAND Inflatable Boat.

5

A Wide Range of Boats

Our range now stands at over 50 models, which together with a comprehensive list of options and accessories means you can select and equip your boat to meet your precise personal requirements. In addition, we offer a wide range of color schemes for the tubes, GRP and upholstery providing you with the opportunity to create something truly unique.



6

A Totally European Product

Every GRAND boat is built in Europe without compromise in terms of workmanship, materials, engineering and quality. By combining aerodynamic principles with advanced design and manufacturing concepts we provide our customers with boats in which every component is quality assured and traceable to its source. That's a high standard to maintain but we wouldn't have it any other way!

7

International Distribution and Dealer Network

A fast and reliable distribution network is an essential part of any successful multinational business because it enables customers to get products and services when they need them. GRAND's worldwide network of Authorized Distributors and Dealers provides our customers not only with great boats and accessories but also first class sales and service backup.



8

International Warranty

GRAND products carry a full two-year International Warranty on all models based on recreational use, so you can relax and enjoy your boat with maximum reassurance after purchase.



7

9 Model Range — Continual Improvement

There was nothing ever made that could not be done a little better and this is why we regularly review and update our model range in order to reflect the latest trends in design and safety. We are not a Company that rests on it's laurels and our policy of Continual Improvement has resulted in many of our models becoming "classics" of their type.

10 Inflatable Tubes with Profiled Fiberglass Step Ends

The majority of our RIBs include, as standard equipment or as an option, a feature developed by GRAND — inflatable tubes with Profiled Fiberglass Step Ends. The advantages include:

- They are a particularly useful feature when swimming, boarding or docking
- They are safe and comfortable to stand or sit on when the boat is at rest.
- They work as a passive trim-tab, pushing the bow down when under way.

Once you have enjoyed the advantages of our Step Ends you won't want to be without them!



11 Style and Practicality

We believe that in order to achieve an overall success with the design brief it is also important to combine style with practicality. Our designers pay particular attention to the ergonomics as well as the elegance of their designs, the results of which we hope our customers will really appreciate!

12 High Quality and Fair Prices

Our definition of "Quality" is that the product meets not only our Customers requirements but also those set out in international standards such as International Standards ISO/FDIS-6185, ISO 12217 and the European Union Directive 2013/53/EU. Our internal quality management procedures are amongst the highest in the industry so the challenge has been to achieve this at a cost that ensures good value for money. Based on the feedback we receive from our customers we seem to be doing this rather well!



13 High Quality Materials for High Quality Boats

GRAND's inflatables are made from five layers of 1100Dtes Polyester fabric and 1680 Dtex, which is reinforced with MIRASOL and HEYTEX fabrics to ensure outstanding durability and abrasion resistance. Where HYPALON tubes are specified we use ORCA® engineered fabric which provides the quality, strength and durability necessary to ensure customers receive the best performing products available. These fabrics combined with our new HTL adhesive ensures our products possess a high level of structural integrity and the ability to withstand temperatures of up to 90°C!

14 Unique Designs and Technical Perfection!

Every GRAND model incorporates a unique combination of innovative techniques, patented designs plus many years of experience and expertise. By utilizing the latest CAD/CAM technology with the most advanced software, every GRAND is perfected to the smallest detail to ensure the utmost quality. Once the prototype model has been constructed, it is subjected to an extensive range of sea trials in the toughest conditions before it sees a showroom floor! After every production stage each boat passes a strict quality control test against a challenging set of parameters and all models are required to pass CE certification before series production begins.



15 SeaDek High Performance Flooring

GRAND GOLDEN LINE boats are now available with SeaDek high performance flooring. SeaDek® is manufactured in the USA from a nonabsorbent, closed cell copolymer material specially formulated for marine applications. This material is an innovative, textured micro-dot surface with enhanced non-slip characteristics. SeaDek is a durable UV resistant non-absorbable material providing protection for boat surfaces, especially in high traffic areas. Other SeaDek benefits include:

- Exceptional traction even when wet
- Unparalleled comfort when standing, walking or leaning on boat surfaces
- Shock absorption, which decreases fatigue
- Protection for boat surfaces against scratches, chips and dents
- Noise reduction characteristics – ideal for fishermen

SeaDek is specially formulated for marine applications and will further enhance both the appearance and safety features of our boats.

Golden Line





G850



G850L

Our new Golden Line G850 is the flagship of the GRAND fleet. This magnificent 8.5 meter Day Cruiser combines performance with all the modern comforts associated with a luxury RIB.

The general arrangement follows a classic layout with generous sunbathing areas both at bow and stern, ergonomically designed helm and passenger seating with cooling drawer and space for a sink and hob unit.

Our U-form seating in the rear of the cockpit will easily accommodate both friends and family. The lifting hatch at the forward end of the steering console provides access, via molded in steps, to the large compartment, which can accommodate both a marine WC and sink. The hull meets the requirements of CE category B so when the water gets rough the robust Deep "V" hull will offer great stability. At high speeds this craft certainly makes a statement with its superb driving dynamics and precision handling. With single or twin engine options together with an extensive range of optional equipment the G850 will meet all your requirements for performance, comfort, safety and enjoyment.

With the wind in your face experience the unparalleled excitement of being out on the water in your own G850!

good reasons to choose Grand!



1. The integrated swimming platforms are both stylish and functional



2. Spacious rear storage compartment with gas springs



3. Huge dashboard with plenty of space for a variety of instruments and electronics



4. The possibility of using dual engines for professional use



5. Cooling drawer (optional) is conveniently located to the rear of the steering console



G850GL with optional bimini top, table and bicolor upholstery



The Pursuit of Excellence

G850

STANDARD FEATURES:

- Deep-V fiberglass hull with transom extensions, bow towing eye and self-bailing cockpit
- Heavy-duty HYPALON tube
- Anchor locker and bow locker compartment
- Bow step plate with two cleats
- Steering console CL-21 with front lifting seat, windshield, handrail and glove box
- Helm and passenger SD-21 folding seats with hatch cover
- U-form rear seat with 2 side lockers, soft cushions and high seat back
- Stern locker with large access panel and gas springs
- Two stern handrails, cleats and towing eyes
- Built in fuel system with 300 liter tank and sender

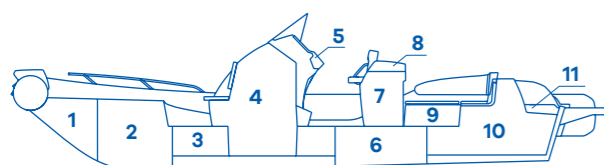
GRAND LUXE FEATURES:

- Two swimming platforms with folding ladder for one or two engines
- Two rear rope hatches
- Stainless steel bow rails
- Waterski towing arch with GRP top

OPTIONAL EQUIPMENT:

- Electric anchor with lifting mechanism
- Hydraulic steering system
- Cooling drawer
- Water shower set with pump and 100l tank
- Washdown system
- Overall cover, consoles and rear seat covers
- Removable table with 4 cup holders
- Rear Sundeck
- Stainless steel bimini top
- Keel protector
- 2 overpressure valves

Compartments chart



- | | |
|--------------------------|---------------------------------------|
| 1. Bow anchor storage | 7. Double seat/cooling drawer/storage |
| 2. Bow locker | 8. Wash basin/hob unit |
| 3. Under deck storage | 9. Two side storage boxes |
| 4. Console storage | 10. Rear storage |
| 5. Glove box with hatch | 11. Rope storage |
| 6. Fuel tank compartment | |



The Golden Line G650 — another breathtaking creation from GRAND!

This model represents a new and unique concept with several great ideas and features, which makes it a notable event in the boating world. Let's have a look at some of them:

- A U-form rear sofa-style seat; a common feature on larger RIBs, but this is the first time it has been so neatly accommodated in a 6.5m model.
- The bow tube has been cleverly curved introducing a nice touch of elegance to the boat's lines.
- A new concept steering console incorporating an impressive and spacious dashboard.
- An elegant helming console with folding seats and handrails.
- A stylish and innovative waterski towing arch, combining the features of the navigation arch with wakeboard or waterski towing capability.

And finally, we believe our new Golden Line G650 is perhaps the most beautiful boat our factory has created and we hope it will be much appreciated by our GRAND Customers.

The boat is available either with PVC or HYPALON tubes.

5 good reasons to choose Grand!



1. U-form sofa-style rear seat with comfortable seat backs and two side rails



2. Deep-V hull with transom extensions for superior performance and soft ride.



3. High-end steering console design for 12" GPS and all electronics.



4. Transom extensions, GRP step ends and swim platforms for performance and comfort



5. Elegant and easily stored deck mounted pedestal table with 4 cup holders

G650



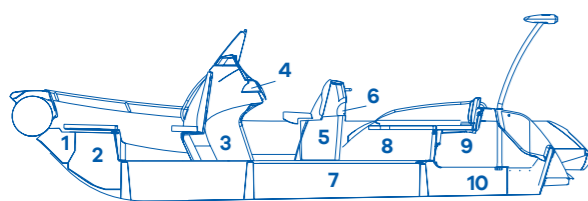
G650LF



G650GLF with optional table



G650



Compartments chart

- | | |
|-------------------------|---------------------------|
| 1. Bow anchor storage | 7. Fuel tank compartment |
| 2. Bow locker | 8. Two side storage boxes |
| 3. Console storage | 9. Two side storage boxes |
| 4. Glove box with hatch | 10. Main rear storage |
| 5. Double seat storage | 11. Lower rear storage |
| 6. Seat storage shelf | |

STANDARD FEATURES FOR DELUXE VERSION:

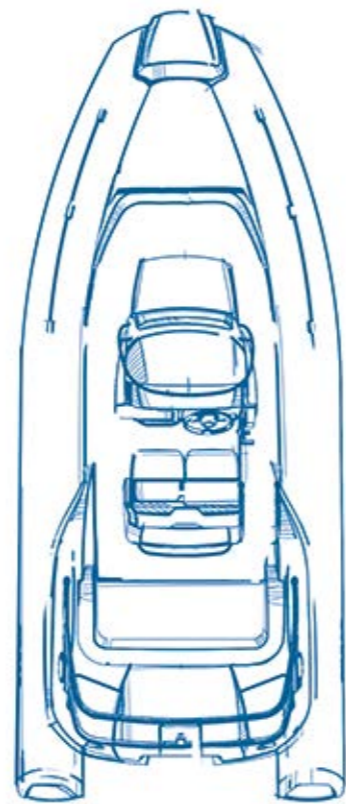
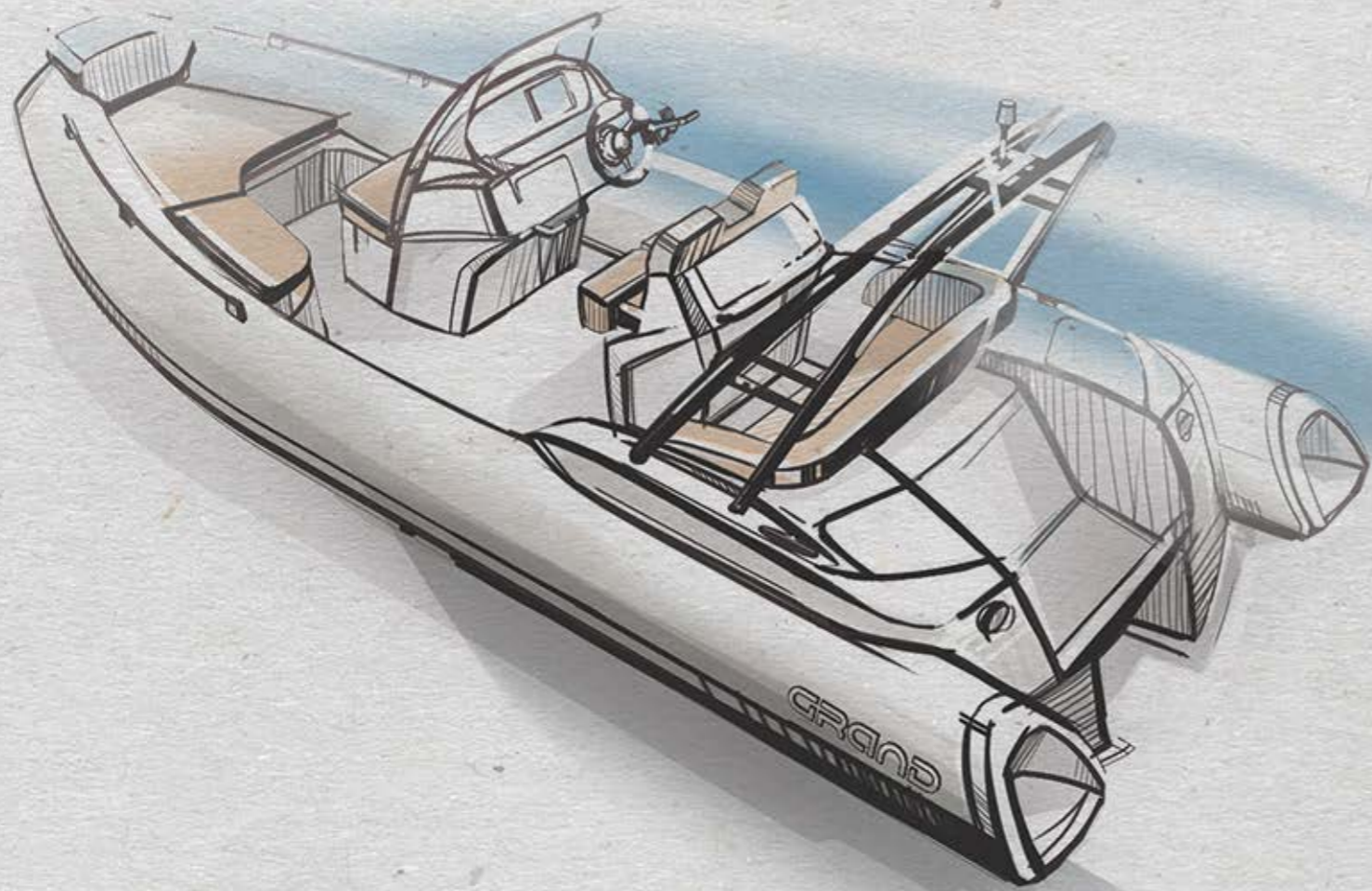
- Deep-V fiberglass hull with transom extensions, bow towing eye and self-bailing cockpit
- "DART" system inflatable tube with GRP step ends
- Bow locker with anchor compartment and hatch
- Bow step plate with nav. Lights, anchor roller and cleat
- Steering console CL-16, front seat with side rails, windshield with handrail, passenger grab handle and glove box
- Helm and passenger double seat SD-11 with two folding seats
- U-form rear sofa-style seating with two side lockers, soft cushions and high seat back
- Rear locker with large access panel and gas springs
- Rear handrails two rear cleats and towing eyes
- Built in fuel system with 200 liter tank and sender
- 2 front and 2 rear liftig eyes
- Maintenance kit, pump, 2 paddles and manual

STANDARD FEATURES FOR DELUXE VERSION:

- Two swimming platforms with folding ladder
- Electric package with nav. lights, bilge pump, electric horn, switches, battery switch and complete wiring
- Stainless steel bow rails

OPTIONAL EQUIPMENT:

- Bow sundeck, rear sundeck and rear sundeck extension
- Keel and tube protector packages
- Waterski towing arch with towing eye and GRP top
- Removable table with 4 cup holders
- Overall cover, consoles and rear seat covers
- Water shower set with pump and 50-lit tank
- Collapsible stainless steel bimini top
- Overpressure valve
- SILVERTEX upholstery upgrade



G580

G580

The NEW Grand G580 — available in early 2017!

As part of our on-going product development program we are delighted to announce the introduction of our new Golden Line G580. This new RIB will sit neatly between two of our existing best sellers – the G500 and G650.

Whilst retaining the overall styling concept of the series the G580 will have its own distinctive features:

- Updated hull and tube geometry based on a synthesis of modern design and ergonomics.
- Dynamic shape contouring with sweeping lines.
- Plenty of storage capacity.
- Double pilot/passenger seat.

Preliminary computer simulation shows excellent results in terms of seaworthiness, load capacity and other key parameters including the full range of outboards proposed for this model.

As with all models in the GOLDEN LINE Series, the G580 will be equipped with a comprehensive list of standard equipment plus a wide range of optional accessories that will give your boat its unique individuality.

Details of the preliminary technical data are shown in the table below:

Technical Data Specification

Length overall	cm	580
	inches	19' 0"
Width overall	cm	245
	inches	8' 0"
Tube diameter	cm	50
	inches	20"
Bare Boat weight	kg	550
	lbs	1210
Loading capacity	kg	700
	lbs	1540
Passenger capacity		12
Nº of chambers		5
Engine max	HP	150
	KW	110,4
Boat design category		C



Special attention has been paid to the ergonomically designed steering console particularly with respect to seating, instrument panel and effective wind protection.





The Golden Line G500 represents a fresh approach by our design team.

This 5-meter model is capable of handling engines up to 115hp and is great at riding the waves whilst also delivering the thrills and spills of water sports, keeping up with fish or simply enjoying the excitement of speed over the water. It is one of the safest and most comfortable boats in it's class with its light-weight, high-performance structure together with a heavy-duty, Deep "V" hand laid hull and an elegance of design that boaters will readily appreciate.

The helming position is well designed and comfortable while the rest of the cockpit will certainly meet your passengers' needs.

This new, innovative model has the potential to transform your expectations in terms of performance, family enjoyment and safety.

The boat is available with PVC or HYPALON tubes.

5 good reasons to choose Grand!



1. Spacious cockpit with plenty of storage and sundeck area



2. Very comfortable seating arrangement for helm and passengers



3. Sports design console and dashboard for all your electronics and instruments



4. Combined navigation and waterski towing arch



5. Superior performance and safety even on rough waters!

G500



G500LF



G500GLF with optional sundeck & navigation \ waterski towing arch



G500

STANDARD FEATURES FOR DELUXE VERSION:

- Deep-V fiberglass hull with transom extensions, bow towing eye and self-bailing cockpit
- Bow anchor compartment with hatch and soft cushion
- Molded in bow locker with large access cover and soft cushion
- Bow step plate with navigation lights, anchor roller and cleat
- 2 front stainless steel cup holders
- Steering console CL-21 with front seat, windshield, side rails, grab handle and glove box
- Rear locker with access panel, lifters, soft seat and seat back
- 2 rear pull up stainless steel cleats, 2 towing eyes
- Stainless steel rear handrails
- 2 front and 3 rear lifting eyes
- Built in fuel system with 90 liter tank and sender
- Maintenance kit, pump, 2 paddles and manual

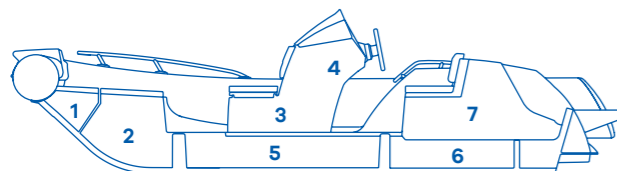
GRAND LUXE FEATURES:

- Two swimming platforms with folding ladder
- Electric package with navigation lights, bilge pump, electric horn, switches, battery switch and complete wiring
- Stainless steel bow rails

OPTIONAL EQUIPMENT:

- Removable bow sundeck with cushion
- Keel and tube protector packages
- Stainless steel navigation/waterski towing arch
- Overall cover for boat, overall cover for console and rear seat
- Collapsible stainless steel bimini top
- Bottom hull and step ends upgrade to custom gelcoat
- Overpressure valve
- SILVERTEX upholstery upgrade

Compartments chart



1. Bow anchor storage
2. Bow locker
3. Console storage
4. Glove box with hatch
5. Fuel tank compartment
6. Rear dry storage
7. Rear lower compartment



G480



G480LF

This GOLDEN LINE G480 Rider certainly pushes the envelope in terms of contemporary naval architecture and engineering whilst not forgetting the desirability of elegance within the overall design.

With an impressive list of standard features, together with a thoughtful options list, this model will undoubtedly serve the needs of both versatile and adventurous boaters.

With its first-rate performance, stylish looks and plush appointments, this GOLDEN LINE Rider certainly delivers a high level of luxury boating, offering a first-class seat to enjoy the world in style!

The G480 is available in two options with Hypalon and PVC tubes:

- **The DELUXE version (G480LF)** — high-profile boat for cruising and watersports, equipped with high-profile console with windshield and stainless steel navigation arch.
- **The ELITE version (G480EF)** — low-profile boat as a yacht tender, equipped with low-profile steering console and two stainless steel side rails.

Both models are equipped with fiberglass step ends with large steps for easy boarding and swimming.

good reasons to choose Grand!



1.

Exceptional performance, with a smooth and dry ride even on high waves



2. HSH

HSH hull system and transom extensions are the key features of this unique design



3.

Spacious and elegant cockpit provides plenty of sunbathing space and storage



4.

A great boat for all kinds of activities and watersports



5.

Standard GRP tube ends with large steps for easy boarding and better ride



G480EF
with optional waterski
towing arch



G480

STANDARD FEATURES:

- Deep "V" hand-laid fiberglass hull with HSH system, transom extensions and spray protection system
- Antiskid deck surface, hull drain plug and hull vents
- Towing bow eye, 1 front and 2 rear lifting eyes
- 2 rear pull-up cleats
- Cockpit drain system with one-way drain valve
- Tubes with fiberglass step ends
- Soft curved multi-chamber buoyancy tube
- Doubled tough raised rubbing strake with splash guard
- Bow grab handle and onboard safety grab handles
- Molded in bow and rear stowage with cushions
- High-profile steering console with windshield and stainless steel handrail (G480LF)
- Low profile steering console with stainless steel handrail (G480EF)
- Steering system with cable and steering wheel
- Wide bow step plate with pull-up cleat and navigation light
- Stainless steel navigation arch with 2 handrails (G480LF)

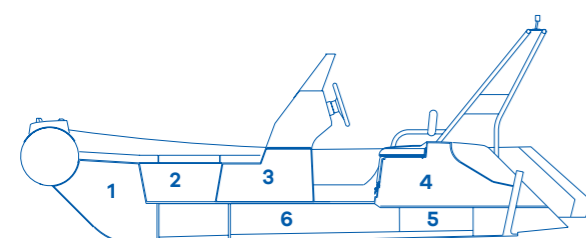
- 2 stainless steel side rails for rear seat (G480EF)
- 2 paddles, Footpump, Maintenance kit & User's manual

STANDARD FEATURES FOR GRAND LUXE VERSION:

- Battery container, isolator switch and cable
- Main boat cable, 3 marine switches with fuses
- Navigation lights, electric horn
- Automatic bilge pump with drain pipe
- Electric accessory socket (phone charge plug)
- Built in 55 liter fuel tank with filler, vent and sender

OPTIONAL EQUIPMENT:

- Stainless steel waterski towing mast
- Keel and Tube Protectors
- Overpressure valve
- Overall cover, steering console cover
- Removable sundeck with cushion, Bimini top
- Removable bow table
- SILVERTEX upholstery upgrade



Compartments chart

1. Bow locker
2. Bow side storage
3. Console storage compartment
4. Rear dry compartment
5. Lower bilge compartment
6. Fuel tank compartment



G340

G340- G380



G380EF

From the outset our GOLDEN LINE Tenders have introduced a new age of luxury in RIB design. With their superior quality, comfort and elegance, this series has become a prestigious and exclusive tender for owners of luxury yachts.

Every model is equipped with a unique water spray protection system that is designed to provide a dry ride with no water entering from the stern. There are currently two models: The G340 (330cm or 10'10") and the G380 (360cm or 11'10") both with fiberglass step ends. They come fully equipped with large bow step plate with navigation light, pull up cleat and soft seat back, low profile console with handrail, and two rear handrails.

But perhaps the most important feature is their unbeatably low weight, which enables them to be accommodated by most davit systems.

- The G340EF weighs in at 129kg (284 lbs) and with a 20hp outboard around 204kg (450 lbs).
- The G380EF weighs in at 170kg (374 lbs) and with a 40hp outboard around 265kg (583 lbs).

GOLDEN LINE Tenders are available with PVC or Hypalon tubes.

5 good reasons to choose Grand!



1.

Lightest luxury dinghies ever! Boat weights: g340 — 129 kg, g380 — 170 kg



2.

Elegant transom extensions for a better ride, stability, flotation and easily getting on plane



3.

Fastest performing hull designs: G340 — 4 cross steps, G380 — HSH system



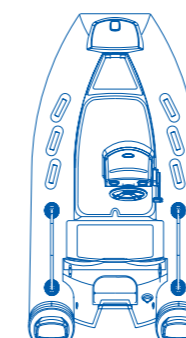
4.

Easy removable side seat with soft cushion (optional)

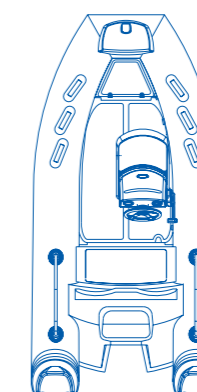


5.

Unique GRP tube ends with large and practical steps for easy boarding, swimming and better ride



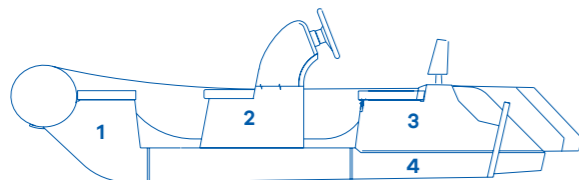
G340EF
25HP, 4 people
330 cm (10'10")



G380EF
40HP, 5 people
360 cm (11'10")



G380



Compartments chart

1. Bow locker
2. Console storage compartment
3. Rear dry compartment
4. Rear lower compartment

STANDARD FEATURES:

- Medium "V" hull with extended transom tabs
- 3 towing bow eyes, 2 front + 2 rear lifting eyes, 2 rear cleats
- Cockpit drain system with one-way drain valve
- Soft curved tube with 3 chambers
- Tough raised rubbing strake with splash guard
- Bow grab handle and onboard safety grab handles
- Molded-in lockable bow stowage with cushion
- Molded-in rear lockable seat with cushion and seat back
- Steering system with cable and steering wheel
- High efficiency foot pump and 2 paddles
- Extended bow step plate with pull-up cleat, navigation light and soft bow seat back
- Low profile steering console with handrail, folding back and front seat (G380EF) with removal cushion
- 2 rear safety handrails
- Tubes with fiberglass step ends

GRAND LUXE PACKAGE FEATURES:

- Battery container, isolator switch and cable
- Main boat cable
- 3 marine switches with fuses
- Navigation lights
- Bilge Pump with drain system
- Electric accessory socket (phone charge plug)

OPTIONAL EQUIPMENT:

- Keel and Tube protection packages
- Built in fuel system with 40 liter tank and sender
- Boat overall cover and steering console cover
- Collapsible bimini-top
- Overpressure valve
- SILVERTEX upholstery upgrade
- Removable side seat package

Silver Line





The SILVER LINE S550 is a GRAND model which will not fail to impress and is fast gaining in popularity.

This long-anticipated model quickly became one of our bestsellers, winning many customers hearts with it's family friendly credentials.

Based on a modular design concept this boat is an ideal solution as a family runabout, watersport workhorse, holiday fun boat and much more. It is easy to transport, provides plenty of storage space and cockpit area and demonstrates an incredibly high performance level and stability due to the advanced easily driven Deep "V" High Step Hull. In fact the S550 has become a truly top class player in the mid size RIB league!

The S550 now comes with fiberglass step ends and a polyester navigation arch as standard equipment. It is available in two versions:

DELUXE with many standard features, and the **GRAND LUXE** with stainless steel bow and rear handrails, electrics package, plus twin swim platforms with ladder.

The **S550** is available either with PVC or HYPALON tubes.

good reasons to choose Grand!



1. Exceptional performance from one of the lightest and strongest fiberglass hulls



2. Unique High Step Hull design for a fast safe and dry ride



3. Large cockpit with plenty of storage, sun-deck and unique tube-mounted bow rails



4. New generation steering console with two panels for instruments and electronics



5. GRP step ends with easy access for boarding, swimming and an improved ride

S550



S550RF



S550GRF
with water ski
mast



S550

STANDARD FEATURES:

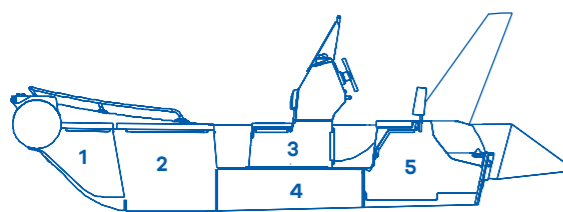
- Heavy-duty Deep-V handlaid polyester hull
- Molded in bow locker with access cover and soft cushion
- Rear locker with access panel, soft seat and seat back
- Fiberglass step ends for inflatable tube
- Steering console CL-10 with windshield and handrail
- Mechanical steering system with steering wheel and cable
- Front storage locker with hatch, lifters and cushion
- Bow towing eye and 4 lifting eyes
- Polyester navigation arch
- 2 rear pull up stainless steel cleats
- Bow step plate with anchor roller, 2 fairleads and pull-up cleat
- Built in 90 liter fuel tank with sender and filler
- Main deck access cover with inspection hatch
- 2 paddles, user's manual and foot pump

GRAND LUXE FEATURES:

- Stainless steel bow rails and two stern handrails
- Electric package
- Two swim platforms with ladder

OPTIONAL EQUIPMENT:

- Removable bow sundeck with cushions
- Water shower set with 50-lit tank, pump, shower
- Overall cover, console cover
- Hydraulic steering system with steering wheel
- Bimini-top
- Keel and tube protection system
- Overpressure valve
- Waterski towing mast
- SILVERTEX upholstery upgrade



Compartments chart

1. Bow locker
2. Large front locker
3. Console storage
4. Rear compartment
5. Fuel tank compartment



S520



S520L
520 cm (17'1") long,
100HP, 9 pers

The Silver Line S520 is one of the latest mid-size designs from GRAND, which from its inception has become a most popular family and holiday boat.

The key points within the design philosophy were to produce a practical, spacious, easy transportable and well-equipped boat at a highly competitive price. The Extra-Deep "V" hull (over 25° on transom and over 50° max) ensures the boat copes easily with choppy inland and coastal waters. If you are looking for a safe, reliable, roomy and easy transportable RIB for your family holiday, look no further – the S520 is exactly what you need!

The S520 is available in three versions:

- **The BASE version (S520)** — boat with bare cockpit suitable for customization.
- **The SPORT version (S520S)** — boat with (CS-03) SPORT console with windshield, handrail and steering system.
- **The DELUXE version (S520L)** — boat which includes the new (CL-12) DELUXE steering console with windshield, handrail, front seat and seatback with stowage compartment plus a rear (SD-02) double seat with stainless steel rails, soft back with lockable stowage compartment.

Each model is available with PVC or HYPALON buoyancy tubes.

good reasons to choose Grand!



1 **Deep-V**

One of the deepest "V" hulls on the market for an exceptionally soft ride



2.

High capacity bow locker with over 200 liters capacity transforms to comfortable sundeck



3.

New CL-12 console with 2 large panels for lots of instruments and electronics



4.

Large, high profile windshield with stainless steel handrail for protection and safety



5.

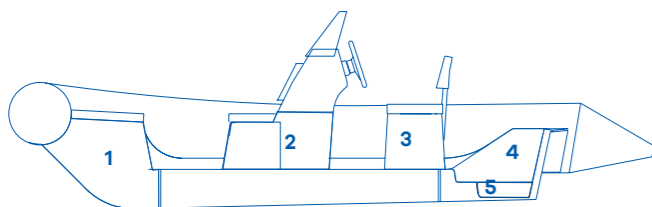
Fiberglass step ends an optional feature for performance, safety and convenience



S520LF
with optional bow step plate, bow cushion & navigation arch



S520



Compartments chart

1. Bow locker
2. Console storage
3. Double seat locker
4. Rear open storage volume
5. Water collector

STANDARD FEATURES:

- Extra-Deep "V" molded fiberglass hull with self-bailing cockpit, fuel tank compartment and access cover
- Molded in high capacity (200 liter) bow locker with access cover
- Towing bow eye, 2 front and 2 rear lifting eyes
- Two cockpit bailers and hull drain plug
- Soft curved multi-chamber buoyancy tube
- 2 rear cleats (excl. BASE)
- Tough raised rubbing strake with splash guard
- Bow grab handle, safety grab handles
- 2 paddles and high-efficiency foot pump
- Maintenance kit & User's manual

STANDARD FEATURES FOR DELUXE VERSION:

- CL-12 steering console with front seat, seat back, windshield, handrail, two dashboards, steering system with cable and steering wheel
- Rear double seat SD-02 with stainless steel handrails, soft seat backs and lockable stowage

STANDARD FEATURES FOR SPORT VERSION:

- CS-03 steering console with windshield and handrail
- Steering system with cable and steering wheel

OPTIONAL EQUIPMENT:

- Fiberglass step ends of the buoyancy tube
- Keel Protector and Tube Protector packages

- Overall cover, steering console cover
- Overpressure valve
- Bow step plate with clam bollard
- Bow locker removable cushion
- Stainless steel polished navigation arch
- Removable sundeck
- Collapsible bimini top
- Complete electric package
- Built in 90 liter fuel tank with sender and filler
- SILVERTEX upholstery upgrade



This Silver Line S470N is a new model replacing our previous S470 bestseller.

The new model retains the original Silver Line philosophy of a practical, spacious and lightweight concept with elegant design but now incorporates the unique GRAND DART hull system with key features:

- A higher keel line with a deeper “V” for a softer ride
- Additional space at the forward end of the cockpit
- Reduced water spray for a drier ride at speed

We have also included a new generation steering console with double seat for a more comfortable ride plus additional storage space.

The S470N is available in three versions:

- **The BASE version (S470N)** — boat with bare cockpit suitable for customization.
- **The SPORT version (S470NS)** — boat with (CS-03) SPORT console, double jockey seat and steering system.
- **The DELUXE version (S470NL)** — boat with new (CL-14) steering console with windshield, handrail and front seat, plus a new stylish (SD-10) double seat.

Each model is available with either PVC or HYPALON buoyancy tubes.

5 good reasons to choose Grand!



1. Spacious cockpit with lots of storage and roomy bow locker



2. Unique “DART hull” performance system with superior stability and dry ride



3. Elegant and slick bow step plate with anchor roller and cleat (optional)



4. Wide and practical console dashboard for all your electronics, radio and stereo



5. New folding stainless steel navigation arch for compact storage and the occasional low bridge

S470N



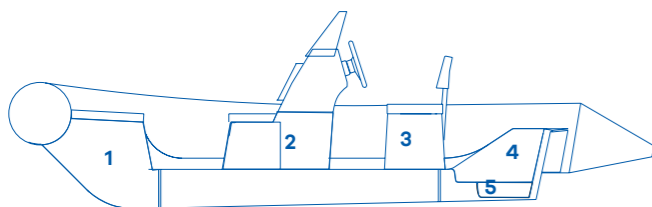
S470NL



S470NSF



S470N



Compartments chart

1. Bow locker
2. Console storage
3. Double seat locker
4. Rear open storage volume
5. Drain well

STANDARD FEATURES FOR BASE VERSION:

- Deep-V hull with original "DART-hull" system
- Molded in spacious bow locker with access cover
- Towing bow eye, 2 front and 2 rear lifting eyes
- Cockpit drain plug (bailer) and hull drain plug
- Soft curved multi-chamber buoyancy tube
- Tough raised rubbing strake with splash guard
- Bow grab handle, safety grab handles
- 2 paddles and high efficiency foot pump
- Maintenance kit & User's manual

STANDARD FEATURES FOR DELUXE VERSION:

- Steering console CL-14 with windshield, handrail, steering system, cable and steering wheel
- Rear double seat SD-10 with seat back and stowage
- Bow locker removable cushion

STANDARD FEATURES FOR SPORT VERSION:

- Steering console CS-03 with windshield and handrail
- Steering system with cable and steering wheel

OPTIONAL EQUIPMENT:

- Fiberglass step ends of the inflatable tube
- Keel Protector and Tube Protector packages
- Overall cover, steering console and seat covers
- Overpressure valve
- Bow step plate with clam bollard
- Bow locker removable cushion (S470N and S470NS)
- Stainless steel folding navigation arch
- Removable sundeck for S470NL
- Collapsible bimini top
- Complete electric package
- SILVERTEX upholstery upgrade



S420N

S370N— S420N



S420NL

The S370N and S420N both represent a contemporary approach to the design of mid sized RIBS. Both models are based on the DART hull system with the following key features include:

- Exceptional stability with softer ride and improved performance.
- Impressive cockpit with wider bow section, more seating and storage.
- Extremely lightweight hull made of hand-laid high density GRP.
- Competitively priced for great value!

The two models comprise the 370 cm (12' 2") and 420 cm (13' 9") with three versions available for each:

- **The BASE version (S370N, S420N)** — boat with 2 wooden seats and oars.
- **The SPORT version (S370NS, S420NS)** — with (CS-01) SPORT console for the S370N, and a new (CS-03) console for the S420N.
- **The DELUXE version (S370NL, S420NL)** — with a new (CL-11) DELUXE steering console and rear (SD-06) double seat with soft back and securable locker.

Each model is available with either PVC or HYPALON buoyancy tubes.

5 good reasons to choose Grand!



1. New generation of fast performing hulls with unique DART hull system from GRAND



2. Spacious cockpit with wide bow locker, ample storage and comfortable seats



3. Lightest available center console boats with double shell hand laid GRP hulls



4. Practical and stylish steering console for an enjoyable ride and easy control



5. New folding stainless steel navigation arch for compact storage and the occasional low bridge



S420N
BASE



S420NS
SPORT



S420NL
DELUXE



S370N

STANDARD FEATURES:

- Medium "V" double shell fiberglass hull with DART performance system and antiskid surface
- Molded in large bow locker with access cover
- Towing bow eye, 2 front and 2 rear lifting eyes
- Soft curved multi-chamber buoyancy tube
- Doubled draining system with 2 plugs and bailer
- Tough raised rubbing strake with splash guard
- Bow grab handle and safety grab handles
- Two wooden seats (BASE only)
- 2 paddles (SPORT, DELUXE), 2 oars + oarlocks (BASE)
- High efficiency foot pump
- Maintenance kit & User's manual

STANDARD FEATURES FOR DELUXE VERSION:

- CL-11 steering console with windshield, st steel railing, steering system, cable and steering wheel
- SD-06 double seat with soft seat, seat back and stowage
- Bow locker removable cushion

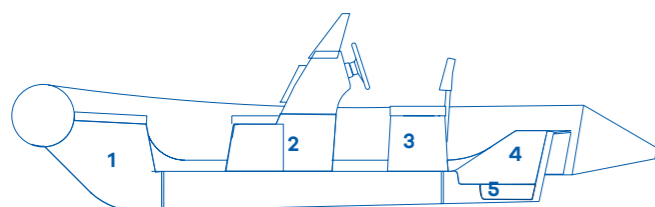
STANDARD FEATURES FOR SPORT VERSION:

- Steering console CS-01W (S370N)
- Steering console CS-03 with windshield and handrail (S420N)
- Steering system with cable and steering wheel

OPTIONAL EQUIPMENT:

- Fiberglass step ends for inflatable tube
- Keel Protector and Tube Protector packages

- Overall cover, steering console cover
- Overpressure valve
- Bow locker removable cushion (BASE and SPORT)
- Folding stainless steel navigation arch
- Removable sundeck with soft cushion (S420NL)
- Collapsible bimini top
- Complete electric package
- Removable seat cushions with bag for S370N
- SILVERTEX upholstery upgrade



Compartments chart

1. Bow locker
2. Console storage
3. Double seat locker
4. Rear open storage volume
5. Drain well



Our SILVER LINE Tenders combine a traditional RIB design with our original styling. They are light in weight, very fast and spacious and rank highly in the rigid inflatable tender class.

SILVER LINE Tenders are produced in four sizes; 250 cm (8'2"), 275 cm (9'0"), 300 cm (10'10") and 330 cm (10'11") and are available in the following versions:-

- **The Base version** — a True Classic. It is a conventional tender featuring two removable wooden seats and oars, along with several other features and optional equipment. Take it out for lunch on the beach or perhaps a short trip to the mainland for supplies.
- **The Sport version** — treat the kids or yourselves. This version comes with GRAND's SPORT console featuring a complete steering system (except S250 and S275) and with the ideal power options; up to 25hp on the 330, to qualify it as a potent and exciting high-speed watercraft. It's for boaters who value fun and great handling!
- **The Deluxe version** — just what your luxury yacht needs! This boat includes the new Deluxe (CL-17) console with a complete steering system (except S250 and S275) and wide (SD-12) double seat with soft back and securable locker.

All models are available with PVC or HYPALON buoyancy tubes.

5 good reasons to choose Grand!



1. New generation of fast performing hulls with unique DART hull system from GRAND



2. The unique 4-step hull is fast and economical (S300 and S330 only)



3. Lightest centre console boats on a market with double shell hand-laid GRP hulls



4. Very practical and stylish steering console design for pleasant drive and complete control



5. New system of folding stainless steel navigation arches for compact storage and low bridges pass

S250—
S330



S300L



S300 BASE



S300S SPORT



S330LF DELUXE

with optional console seat and fiberglass step ends



S330

STANDARD FEATURES FOR BASE VERSION:

- Medium "V" double-shell fiberglass hull
- 4-step hull performance system (S300 and S330)
- Flat antiskid deck surface
- 3 towing bow eyes
- Bow grab handle and two rear handles (S300, S330)
- 2 front and 2 rear st. steel lifting eyes
- Cockpit drain plug (bailer) and hull drain plug
- Soft curved multi-chamber buoyancy tube
- Tough raised rubbing strake with splash guard
- Safety grab handles (lifeline for S250)
- 2 oarlocks with 2 oars and oar posts
- Two removable wooden seats (one seat on S250)
- High efficiency foot pump
- Maintenance kit & User's manual

STANDARD FEATURES FOR SPORT VERSION:

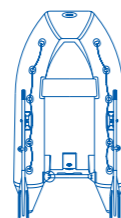
- Steering console CS-01 with steering system, cable and steering wheel
- Built in stainless steel console fittings

STANDARD FEATURES FOR DELUXE VERSION:

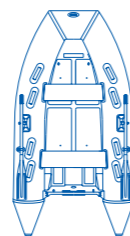
- CL-17 steering console with steering system, cable and steering wheel
- SD-12 double seat with soft seat, seat back and stowage
- Inbuilt stainless steel fittings for consoles

OPTIONAL EQUIPMENT:

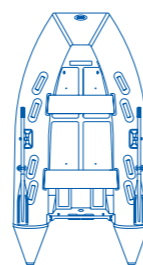
- Additional console seat (S300L, S330L)
- Fiberglass step ends for inflatable tube (except S250)
- Overall cover
- Bow stowage bag
- Overpressure valve
- Soft seat cushions with under-seat bag
- Keel protector and tube protector package
- SPORT console cover
- DELUXE consoles cover



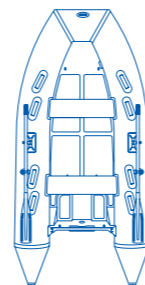
S250
250 (8' 2")
6HP, 2 pers



S275
275 (9' 0")
10HP, 3 pers



S300
300 (9' 10")
15HP, 4 pers



S330
330 (10' 10")
20HP, 4 pers

Foldable Boats





R380- R460



R420

The RANGER series are heavy-duty, foldable, inflatable boats specially designed for water sports and demanding applications.

With their superior strength, technology, hydrodynamics and GRAND's expertise, the RANGER is a tough model that guarantees the utmost Safety, Stability and Power! They can readily pull double-duty for demanding, professional on-water applications or ideally serve recreational boaters who fish, dive, waterski or cruise with the family, even under the sternest sea conditions.

There are three models in the range: 380 cm (12'6"), 420 cm (13'9") and 460cm (15'1"). Each can be upgraded to a solid wooden keel (optional) or PRO-grade fabric for professional applications.

A Real Boat for Real Men!

5 good reasons to choose Grand!



1. Toughest boat for military, patrol, rescue, and other professional applications



2. Spacious cockpit with easy to install wooden seats and antiskid floorboards



3. Perfect choice for fishing, diving and a great holiday boat



4. It perfectly fits a trailer, being always ready for any occasion, even firefighting



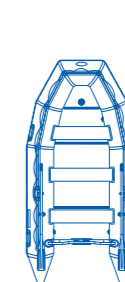
5. Lowered tube ends stabilize the boat at fast speed and make the ride dry

STANDARD FEATURES:

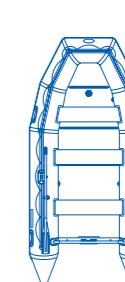
- Medium-V bottom
- Marine grade plywood floorboards with inflatable keel
- Anodized aluminum reinforcement system
- Reinforced integral transom for outboard engine
- 3 reinforced towing bow eyes
- Cockpit drain plug (bailer)
- Multi-chamber buoyancy tube
- Tough raised rubbing strake with splash guard
- 3 removable wooden seats (4 on R460)
- Substantial safety line with attachment bar
- Bow grab handle
- 2 side and 2 rear lifting handles
- 2 oarlocks with 2 oars and oar posts
- 2 Carry bags
- High efficiency foot pump
- Maintenance kit & User's manual

OPTIONAL EQUIPMENT:

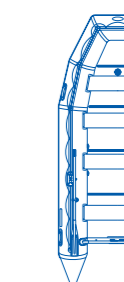
- Steering console CS-02 with steering system, steering wheel, cable and installation system
- Boat overall cover
- Overpressure valve
- Soft seat cushions with underseat bags
- Keel and Tube Protection package
- Wooden keel with solid installation system
- Upgrade to HEAVY DUTY material (1400 g/sq.m.)
- Collapsible bimini-top



R380
380cm (12'6")
30HP, 7 pers



R420
420cm (13'9")
40HP, 9 pers



R460
460cm (15'1")
50HP, 10 pers



C240— C360



C360

There's no limit to practicality and excitement with GRAND's Corvette series of foldable tenders.

An excellent choice for any yachtsmen, the CORVETTE series feature a traditional design, GRAND's original styling, and are light, spacious and easily portable whether they are stowed away or ready to run. They also have impressive agility and load capacities, making them the perfect model for fishing, camping and family fun!

Five base models are available ranging from 240 cm (8') to 360 cm (12'), with two versions:

- Strong marine-grade plywood floorboards with heavy-anodized aluminum reinforcement (C240-C360).
- Modern and light high-pressure inflatable floor/air deck (C240A-C360A).

All you have to do is choose the right size for your activity and let it rip!

5 good reasons to choose Grand!



1.

All models easily get on plane and are fast performing even with small motors



2.

V-shaped transom with original metal reinforced installation system



3.

Substantial inflatable keel for a solid performance on rough waters



4.

Optional overpressure valve to protect against pressure and temperature extremes



5.

Compact and low weight design for simple and efficient assembling

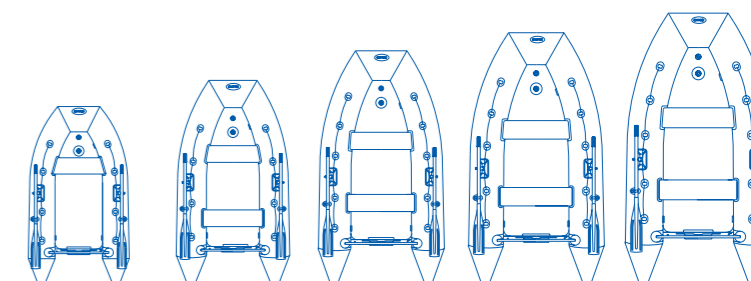
STANDARD FEATURES:

- Medium "V" bottom and "V"-shaped transom
- Antiskid marine ply floorboards with aluminum reinforcement and inflatable keel (C240-C360)
- High-pressure air deck with inflatable keel (C240A-C360A)
- Soft-curved collar with 3 chambers
- Integral transom for outboard engine
- 3 towing bow eyes
- Cockpit one way drain valve (bailer)
- Tough raised rubbing strake with splash guard
- Safety life line
- Bow grab handle
- Two rear grab handles (C300,C300A-C360,C360A)
- 2 oarlocks with 2 oars and oar posts
- 2 removable wooden seats (1 on C240,C240A)

- High-efficiency foot pump for C240-C360
- 2 Chamber high-pressure pump for C240A-C360A

OPTIONAL EQUIPMENT:

- Front & rear soft cushions (close-cell foam) with the removable under-seat bags
- Overall cover
- Overpressure valve
- Tube and keel protection package



C240
240 cm 7' 10"
5HP, 2 pers

C270
270 cm 8' 10"
10HP, 3 pers

C300
300 cm 9' 10"
15HP, 4 pers

C330
330 cm 10' 10"
20HP, 4 pers

C360
360 cm 11' 8"
30HP, 5 pers



E210- E300



E240

The ELF series is the perfect example that great things come in small packages.

The ELF models are small and light inflatable dinghies that are ready to perform when the duty calls. A top choice for owners of sailboats and motoryachts, models in the ELF series are compact, easy to use and assemble. They are also tough as nails to provide years of use. In addition to impressive capacities and slatted flooring with extremely low maintenance, every ELF is featured-packed and designed to provide the utmost safety and stability. They are the perfect choice for camping and a reliable model to introduce your children to the exciting world of boating. The ELF series includes four models from 210 cm (7') to 300 cm (10') with slatted deck, which is light, easy to pack and maintain, and safe to use. And each of them is easy to Ride, easy to Row, easy to Carry, easy to Tow!

5 good reasons to choose Grand!



1. All boats are easy to carry and are light weight, starting from only 18kg for E210



2. All models are very compact and can fit a trunk of any car



3. The most simple, easy to use and reliable wooden seat installation system



4. Uniquely designed lifeline, which is always tight and will never get loose



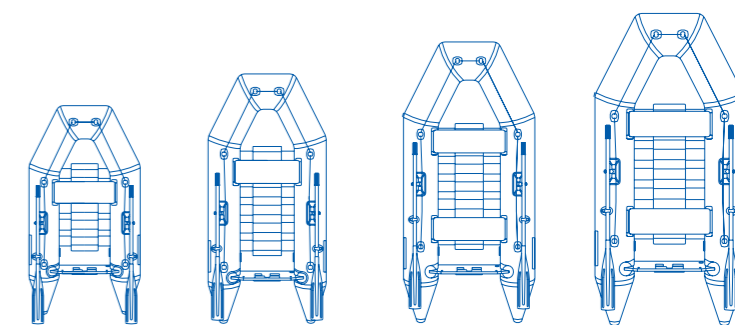
5. Extended and lowered down tube ends are an excellent feature for more flotation and stability

STANDARD FEATURES:

- Multi chamber buoyancy tube
- Integral marine grade ply transom
- Slatted deck bottom on E210-E300
- 2 oarlocks with 2 oars and oar posts
- 3 towing bow eyes
- Cockpit drain valve (one-way bailer)
- Rubbing strake with splash guard
- Safety life line
- Bow grab handle
- High efficiency foot pump
- Two removable wooden seats (1 seat on E210, E240)

OPTIONAL EQUIPMENT:

- Overall cover
- Soft seats with removable under-seat bags
- Overpressure valve



E210
210 cm 6'11"
4HP, 2 pers

E240
240 cm 7'10"
5HP, 3 pers

E270
270 cm 8'11"
8HP, 3 pers

E300
300 cm 9'10"
10HP, 4 pers



A380— A550



A450
Adjustable rail-based sliding seats system

Our new series of inflatable canoes ARGUS are an outstanding example of combining the superior buoyancy, stability and performance of inflatables with the idea of the classic canoe.

They are excellent for relaxed paddling or extreme exploration of remote places in wild nature. Oars or paddles, an outboard motor or a sailing kit- all the propulsion means are available, along with different options of seating for your very own comfort.

There are three sizes (380 cm, 450 cm, 550 cm) for 2, 3, and 4 passengers and 2 versions: DISCOVERY (basic version) and PRO (with extra features).

We are happy to offer three unique features:

- Adjustable rail-based sliding seats system.
- Two water deflectors in the front for splash protection on high speed.
- Two low profile stability skegs in the rear for extra tube protection.

5 good reasons to choose Grand!



1. Amazingly light (from only 20kg) and portable so as to easily fit in your car's trunk



2. Easy to carry in the bag and very fast to assemble in just 5 min



3. Easy handling, great performance and tracking with two oversize fins



4. Solid and robust hull structure and superior stability for rapids and even wite-water use



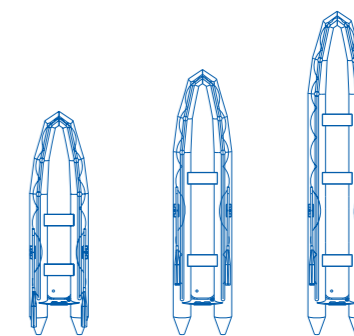
5. Roomy cockpit with impressive load capacity and integral transom to accommodate up to 8hp outboard motor

STANDARD FEATURES (DISCOVERY AND PRO):

- Multi chamber buoyancy tube with lowered cones
- Integral marine grade plywood transom
- Cockpit drain valve (one-way bailer)
- Removable high-pressure airdeck
- Stainless steel towing eye
- 2 rear carry handles
- Tube extra protectors at the bow
- Safety life line around the perimeter
- 2 rear T-form fins for directional stability
- Original rail-based sliding system for wooden seats
- 2 (A380, A450) or 3 (A550) removable wooden seats
- 2 front water deflectors for splash protection
- Two chamber high-pressure foot pump
- Carry bag
- Maintenance kit & User's manual

OPTIONAL EQUIPMENT:

- T-form lifeline bar to increase freeboard
- 2 oarlocks with 2 oars and oar posts



A380 380cm (12'6") 5HP, 2 pers	A450 450cm (14'9") 6HP, 3 pers	A550 550cm (18'1") 8HP, 4 pers
---	---	---

Optional Equipment & Technical Data



Optional Equipment

For a complete list of all options and accessories please visit our website www.grandboats.com



**Steering console
CL-01**



**Steering console
CL-14**



**Steering console
CS-01W**



**Steering console
CS-02**



**Steering console
CL-12**



**Steering console
CL-16**



**Cruising bar
SD-11**



**Double seats
SD-06**

Technical Data Specification

SERIES		Silver Line/ Tenders			Rangers			Corvette							
Models		S300/S300S	S275	S250	R380	R420	R460	C240/C240A	C270/C270A	C300/C300A	C330/C330A				
Length overall	cm	300	275	250	380	420	460	240	270	300	330				
	inches	9' 10"	9' 0"	8' 2"	12' 6"	13' 9"	15' 1"	7' 10"	8' 10"	9' 10"	10' 10"				
Length internal	cm	200	182	166	265	300	340	165	187	205	235				
	inches	6' 7"	6' 0"	5' 5"	8' 8"	9' 10"	11' 2"	5' 5"	6' 2"	6' 9"	7' 9"				
Width overall	cm	167	155	146	190	205	205	140	155	165	165				
	inches	5' 6"	5' 1"	4' 9"	6' 3"	6' 9"	6' 9"	4' 7"	5' 1"	5' 5"	5' 5"				
Width internal	cm	78	70	62	95	105	105	69	73	78	78				
	inches	2' 7"	2' 4"	2' 0"	3' 1"	3' 5"	3' 5"	2' 3"	2' 5"	2' 7"	2' 7"				
Tube diameter	cm	43	40	38	46	48	48	36	40	43	43				
	inches	17"	16"	15"	18"	19"	19"	14"	16"	17"	17"				
Bare Boat weight*	kg	56/77	53	46	78	88	102	29/24	45/32	54/33	60/36				
	lbs	123/169	117	101	172	194	224	64/53	99/70	119/73	132/79				
Transport gross weight**	kg	91/112	87	72	97	110	134	34/29	49/37	59/38	65/41				
	lbs	200/246	191	158	213	242	295	75/64	108/81	130/84	149/90				
Loading capacity***	kg	520	440	330	700	900	1000	300	400	520	600				
	lbs	1144	968	726	1540	1980	2200	660	880	1144	1320				
Passenger capacity		4	3	2	7	9	10	2	3	4	4				
	Nº of chambers****	3	3	3	3+1	5+1	5+1	3+1	3+1	3+1	3+1				
Engine recommended	HP	10	6	3	20	30	40	4	6	10	15				
	KW	7,4	4,4	2,2	14,7	22,1	29,4	2,9	4,4	7,4	11				
Engine max***	HP	15	10	6	30	40	50	5	10	15	20				
	KW	11	7,4	4,4	22,1	29,4	36,8	3,7	7,4	11	14,7				
Engine weight max	kg	50	45	35	80	95	115	25	45	50	50				
	lbs	110	99	77	176	209	253	55	99	110	110				
Engine shaft length	inches	15" (short)	15" (short)	15" (short)	15" (short)	20" (long)	20" (long)	15" (short)	15" (short)	15" (short)	15" (short)				
Midsection / aft deadrise	degrees	19° / 15°	17° / 15°	17° / 15°	15° / 12°	17° / 13°	17° / 13°	11° / 8°	10° / 7°	10° / 7°	10° / 7°				
Stowed dimensions of package N°1	cm	253	225	208	35	165	65	115	115	115	115				
	cm	115	114	114	67	70	80	60	60	60	60				
	cm	57	46	46	40	36	38	32	32	32	32				
	inches	8' 4"	7' 5"	6' 10"	4' 5"	2' 4"	5' 5"	3' 9"	3' 9"	3' 9"	3' 9"				
	inches	3' 9"	3' 9"	3' 9"	2' 2"	1' 2"	2' 7"	2' 0"	2' 0"	2' 0"	2' 0"				
	inches	1' 10"	1' 6"	1' 6"	1' 4"	1' 3"	1' 3"	1' 1"	1' 1"	1' 1"	1' 1"				
Stowed dimensions of package N°2	cm	130			109	133	170		110	110					
	cm	70			62	78	78		60	60					
	cm	43			16	24	22		15	15					
	inches	4' 3"			3' 7"	4' 4"	5' 7"		3' 7"	3' 7"					
	inches	2' 4"			2' 0"	2' 7"	2' 7"		2' 0"	2' 0"					
	inches	1' 5"			0' 6"	0' 9"	0' 9"		0' 6"	0' 6"					
Stowed dimensions of package N°3	cm														
	cm														
	cm														
Hull type	RIB	RIB	RIB	Floorboards + inflatable keel	C240-C360: floorboards+keel; C240A-C360A: airdeck+keel				Slatted deck			Airdeck			
	Boat design category*****	D,C	D	D	D,C	D,C	D,C	—	D	D,C	D,C	D	D	D	D
	Tube colors	B, W, L-G	B, W, L-G	B, W, L-G	B, L-G R	B, L-G R	B, L-G R	B, L-G R	B, L-G R	B, L-G R	B, L-G R	B, L-G R	L-G	L-G	L-G
GRP colors	B, W, D-G, L-G	B, W, D/G, L-G	B, W, D/G, L-G												
	Upholstery colors	B, W, L-G,R	B, W, L-G,R	B, W, L-G,R											

Corvette	Elf				Argus				SERIES
C360/ C360A	E210	E240	E270	E300	A380/ A380P	A450/ A450P	A550/ A550P		Models
360	210	240	270	300	380	450	550	cm	Length overall
11' 10"	6' 11"	7' 10"	8' 10"	9' 10"	12' 6"	14' 9"	18' 1"	inches	Length internal
255	135	165	184	200	300	370	470	cm	Width overall
8' 4"	4' 5"	5' 5"	6' 0"	6' 7"	9' 10"	12' 2"	15' 5"	inches	Width internal
184	130	130	145	160	100	100	104	cm	Tube diameter
6' 0"	4' 3"	4' 3"	4' 9"	5' 3"	3' 3"	3' 3"	3' 5"	inches	Bare Boat weight*
90	57	57	66	77	40	40	40	cm	Transport gross weight**
2' 11"	1' 10"	1' 10"	2' 2"	2' 6"	1' 4"	1' 4"	1' 4"	inches	Loading capacity***
46	34	34	37	40	30	30	32	cm	Passenger capacity
18"	13"	13"	15"	16"	12"	12"	13"	inches	Nº of chambers****
73/42	18	20	24	29	19/24	22/27	30/36	kg	Engine recommended
161/92	40	44	53	64	42/53	48/59	66/79	lbs	Engine max***
78/47	27	28	35	40	27/33	30/35	38/44	kg	Engine weight max
172/103	59	62	77	88	59/70	66/78	84/97	lbs	Engine shaft length
700	220	270	350	540	300	380	500	kg	Midsection / aft deadrise
1540	484	594	770	1188	660	836	1100	lbs	
5	2	3	3	4	2	3	4		cm
3+1	2	2	2	2	4+1	4+1	4+1		cm
20	3	4	6	10	3	4	6	HP	cm
14,7	2,2	2,9	4,4	7	2,2	2,9	4,4	KW	inches
30	4	5	8	10	4	5	8	HP	degrees
22,1	2,9	3,7	5,9	7,4	2,9	3,7	5,9	KW	
80	25	30	40	45	25	30	40	kg	
176	55	66	88	99	55	66	88	lbs	
15" (short)	15" (short)	15" (short)	15" (short)	15" (short)	15" (short)	15" (short)	15" (short)	inches	
12° / 8°	0	0	0	0	0	0	0	degrees	
135	100	100	115	115	95	95	95	cm	
67	56	56	60	60	65	65	65	cm	
40	30	30	32	32	35	45	55	cm	
4' 5"	3' 3"	3' 3"	3' 9"	3' 9"	3' 1"	3' 1"	3' 1"	inches	
2' 2"	1' 10"	1' 10"	2' 0"	2' 0"	2' 2"	2' 2"	2' 2"	inches	
1' 4"	1' 0"	1' 0"	1' 1"	1' 1"	1' 2"	1' 6"	1' 10"	inches	
120								cm	
65								cm	
18								cm	
3' 11"								inches	
2' 2"								inches	
0' 7"								inches	

Colors: ● B — Black ○ W — white ● L-G — Light Gray ● R — Red ● D-G — Dark Gray

Remarks: * — The bare boat weight is just a weight of the empty boat without any removable accessories.
 ** — The transport weight is the weight of the complete boat in standard package.
 *** — Because of differences of local boatbuilding standards The Loading Capacity and Maximum Engine Power may vary by country. Please check that with your local GRAND representatives/Dealers.
 **** — RANGER and CORVETTE with floorboards have 1 extra buoyancy volume — the inflatable keel, CORVETTE with airdeck have 2 extra buoyancy volumes: the keel and the bottom.
 ***** — Boat design Category under European Union Directive 2013 /53/ EU.

All the technical data are subject to change without notice. The products trim may be changed from the originally specified. All the dimensions are + or - 3% All the weights are + or - 10%. Products availability, trim and specifications may vary by country. Please contact your local Dealer / Distributor for update information. The pictures in the catalogue were taken with the professional operators in strictly controlled conditions. Please never try any activity, which is beyond your capabilities, nor which is potentially dangerous. Always wear appropriate and approved life vest or other personal flotation devices and appropriate clothing. Follow the User's manual instructions for the boat and the engine. Make sure that you read and clearly understand all the restrictions and limitations. HAVE A SAFE BOATING!

Distribution Network

CANADA / USA

GRAND MARINE INTERNATIONAL Inc.
176 Rivermede Rd., Unit 2,
Concord, Ontario, L4K3M7,
CANADA
Tel: +1-905-7608519
Fax: +1-905-7608719
www.grandinflatableboats.com
mail@grandboats.ca

CZECH REP / SLOVAKIA

AVAR-YACHT s.ro.
Za Rekou 815, VeverskaBityska,
Brno-venkey 66471, Czech Rep.
Tel: +420 546 428 015
yacht@avaryacht.cz

DENMARK

Salldirect Aps
Standen 23 Kolding
6000 Denmark
Tel: +45 40860882
info@saildirect.dk

ESTONIA

**BALTIC SEAL OU
PUNAME 6 (stock 16)**
Tallin, 13619, Estonia
Tel: +372 53 408 542
rt@balticseal.ee

FINLAND

Mc SEA OY
Martinsillantie 24, 02300,
Espoo, Finland
Tel: +358 9 809 4446
mcsea@mcsea.fi

FRANCE

Groupe YB Nautisme
20 boulevard Gabriel Lippmann
29 850 GOUESNOU
Tel: +33 0(2) 98 36 68 47
www.groupe-yb.fr/contact
contact@groupe-yb.fr

GERMANY / AUSTRIA / SWITZERLAND

NAUTIKPRO GmbH
Am Sandzrug 6, 0437122, Albip,
Germany
Tel: +49 6236 399551
post@nautikpro.de

GREECE

LEADMAR Ltd
31 Vouliagmems
Avenue, Glyfada, 16675,
Athens, Greece
Tel: +30 210 9700 200
sales@leadmar.gr

KALININGRAD REG.(RUSSIA)

LAGUNA
Ul. Professora Baranova 2,
Pay 18, Kaliningrad,
236000, Russia
Tel: +7 4012 761 441
pnv57e@mail.ru

LATVIA / LITHUANIA

RADOX GROUP Ltd.
Maskavas sik Riga,
LA-1063, Latvia
Tel: +371-67-144689
info@grandboats.lv

THE NETHERLANDS / BELGIUM / LUXEMBURG

B&G Boats B.V.
Soldaatweg a 1521 RL
Wormerveer,
The Netherlands
Tel: +31(0)75 614 53 79
www.grandboats.nl
info@grandboats.nl

NORWAY

GOVI AS
P.B. 1065 — Lundsiden
N-4687 Kristiansand,
Norway
Tel: +47 380 15400
terje@govi.no

RUSSIA

GRAND MARINE
www.grandboat.ru

SLOVENIA / CROATIA / SERBIA / ALBANIA / KOSOVO / MACEDONIA / MONTENEGRO

MOTO-NAUTIKA
Ptujaska cesta 63, 2204
Miklavž pri Mariboru, Slovenia
Tel: +00386 2629 0400
info@moto-nautika.com
www.grandboats.si

SWEDEN

Nivado AB
Jägarskogen 1, 155 94
Nykvarn, Sweden
Phone: + 46 8 554 909 55
www.nivado.com
info@nivado.com

TURKEY

Merkur Spor Malzemeleri Paz A.S.
Aydintepe mahallesi ES uzeri,
Nº: 14/F, Tuzla/ Istanbul, Turkey
Tel: +90 216 4945354
www.mercurysport.com
info@mercurysport.com

UAE / INDIA

**EMPIRE MARINE
INTERNATIONAL LLC**
DY115 Al Jadaf, Dubai, UAE
Tel: +00971 4 324 0 300
sales@empire-marine.com

UKRAINE

GERMANTON
Dniprovska naberegna 10,
Yacht-club Riviera
Tel: + 380 67 5458064
www.grandboats.kiev.ua
info@grandboats.kiev.ua

UNITED KINGDOM

WILLS MARINE Ltd.
The Quay, Kingsbridge,
South Devon,
TQ7 1JF, UK
Tel: +44 1548 852424
info@willsmarine.co.uk



GRAND MARINE

Potemkina str, 18a

Solonicevka 62370

Dergachevsky distr.

Kharkovskaya obl.

UKRAINE

Tel: + 380 57 7840125

Tel/fax: + 380 57 7840124

www.grandboats.com

mail@grandmarine.com.ua

